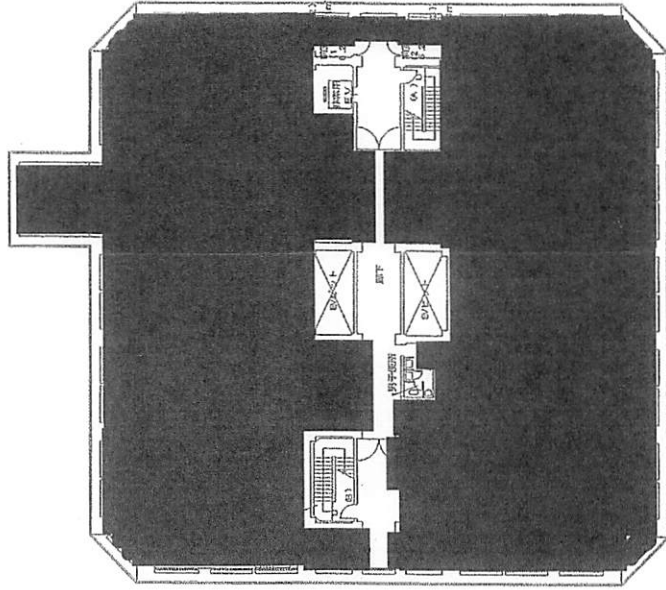
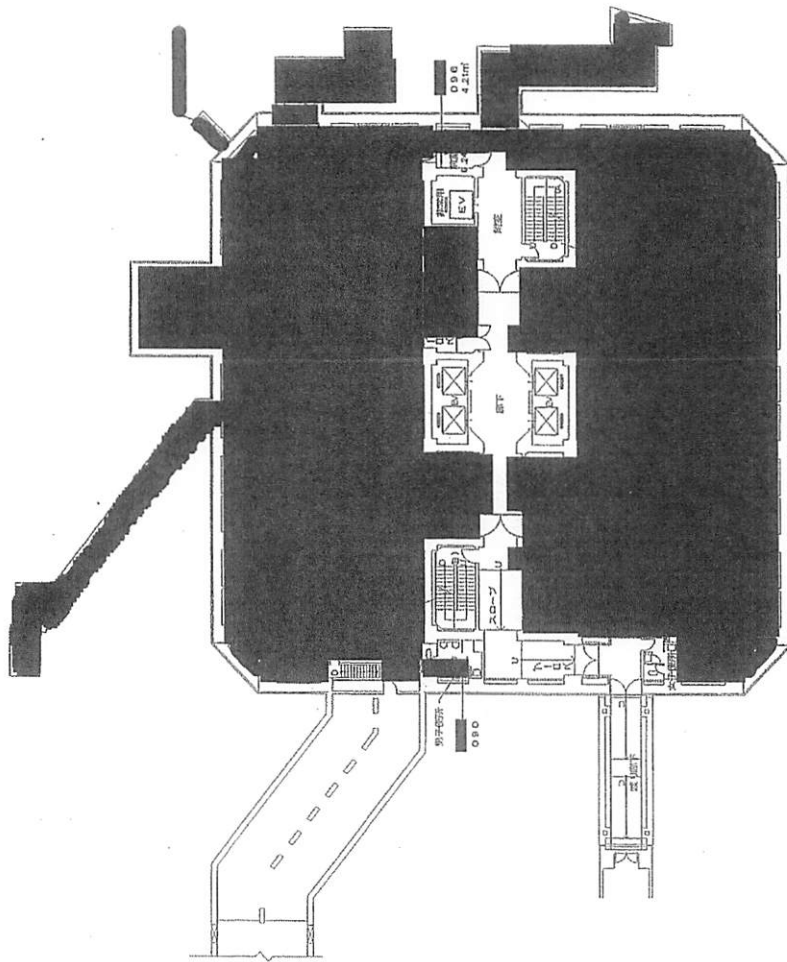


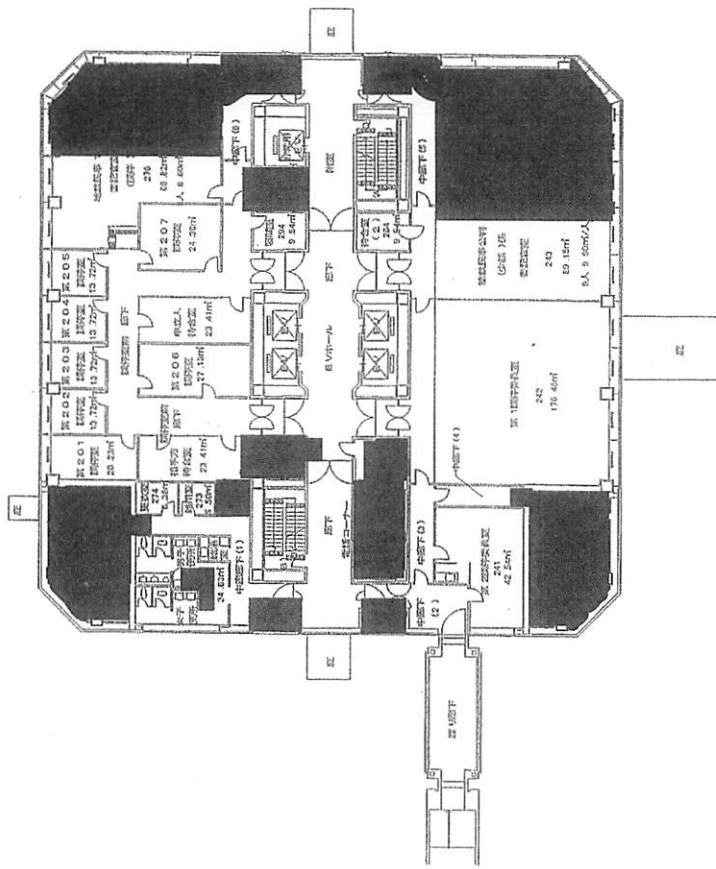
地下中 2階平面図



地下2階平面図 1,423.68㎡ 縮尺 1/400



地下階平面図 1,441.02㎡ 縮尺 1/400

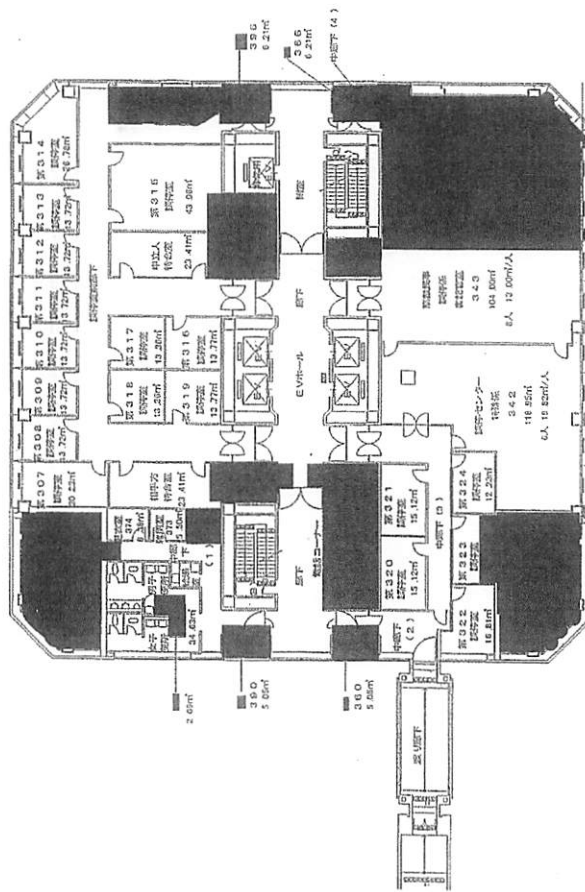


縮尺 1/400

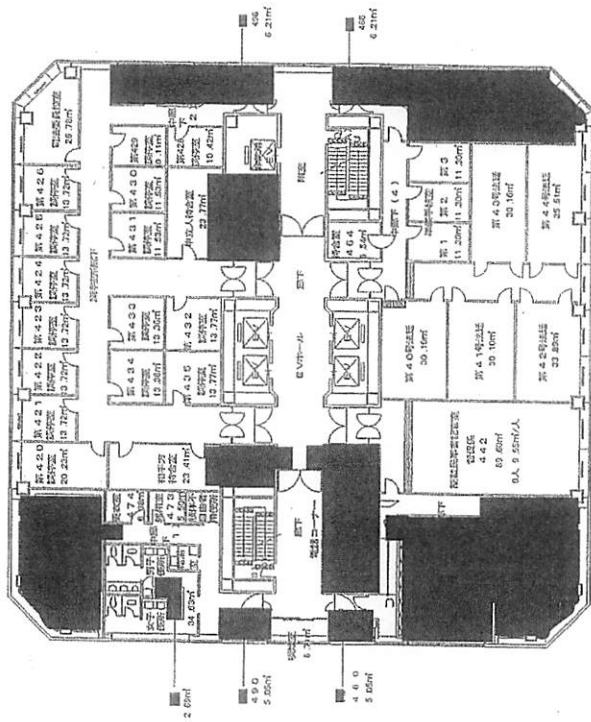
1,467.90㎡

2階平面図

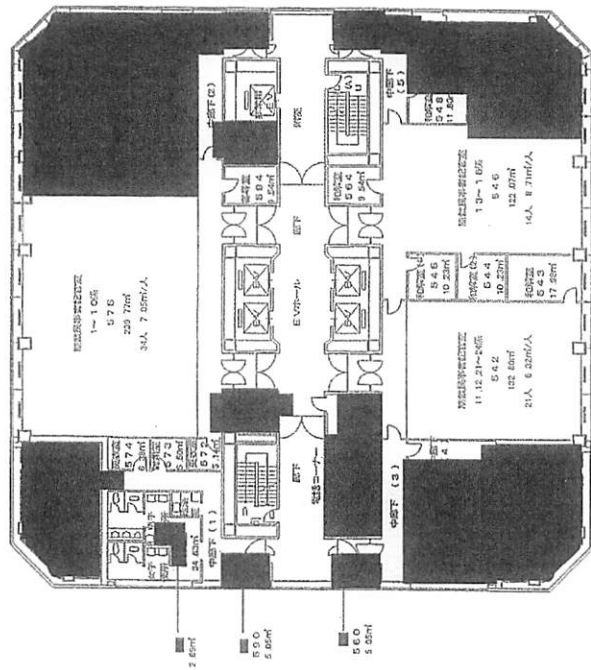
別紙



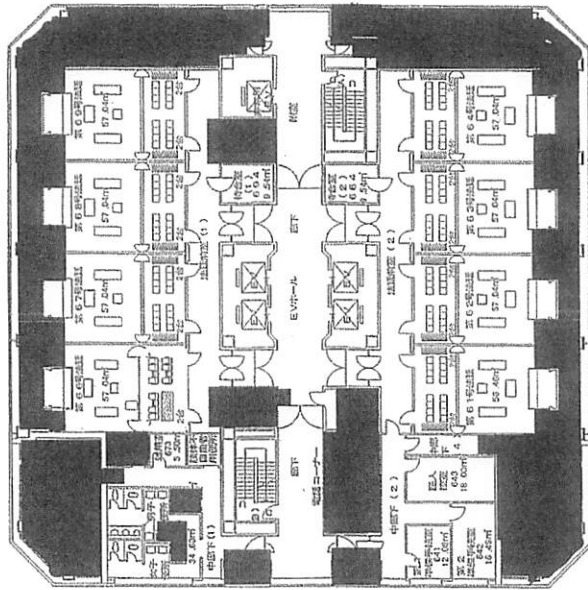
1. 487.53m² 1/400



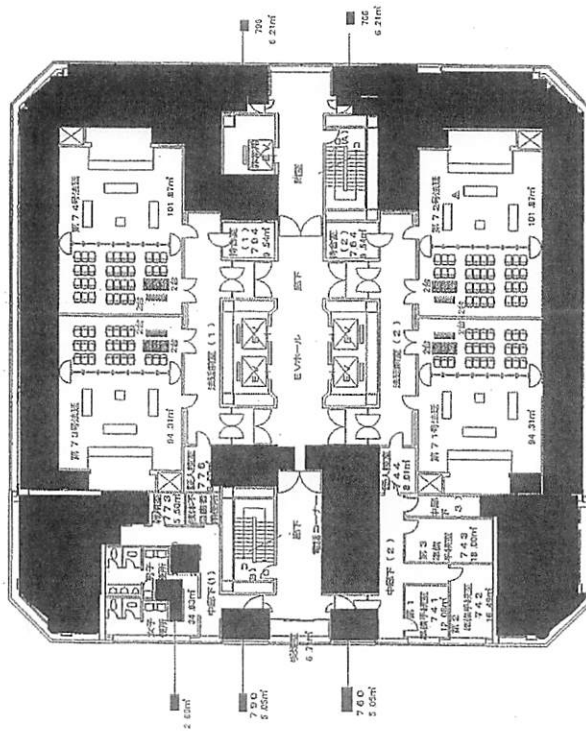
別紙 4階平面図 1,476.61m² 縮尺 1/400



別館 5階平面図 1,476.61m² 縮尺 1/400

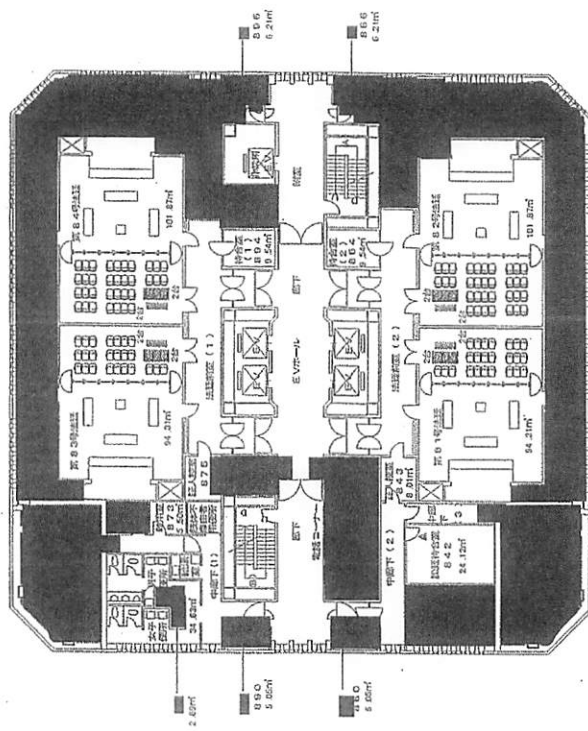


別館 6階平面図 1,476.61m² 縮尺 1/400

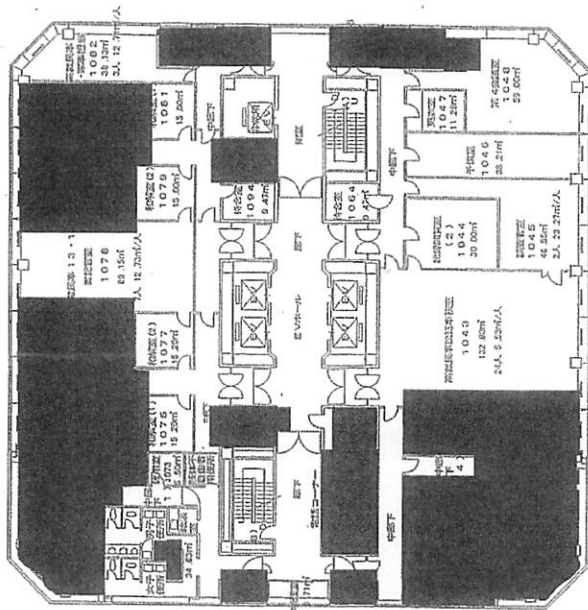


1.038.81m² 82R 1/420

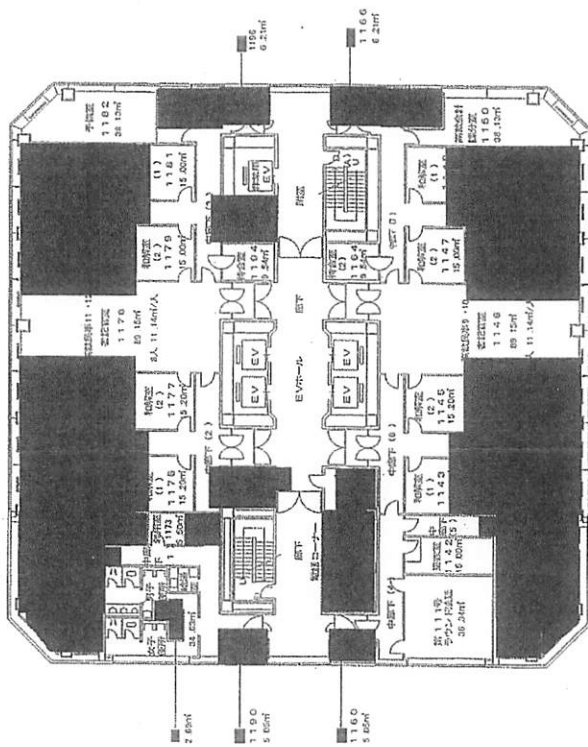
另附底 705-710图



列館 5階平面圖 1,476.61m² 縮尺 1/400

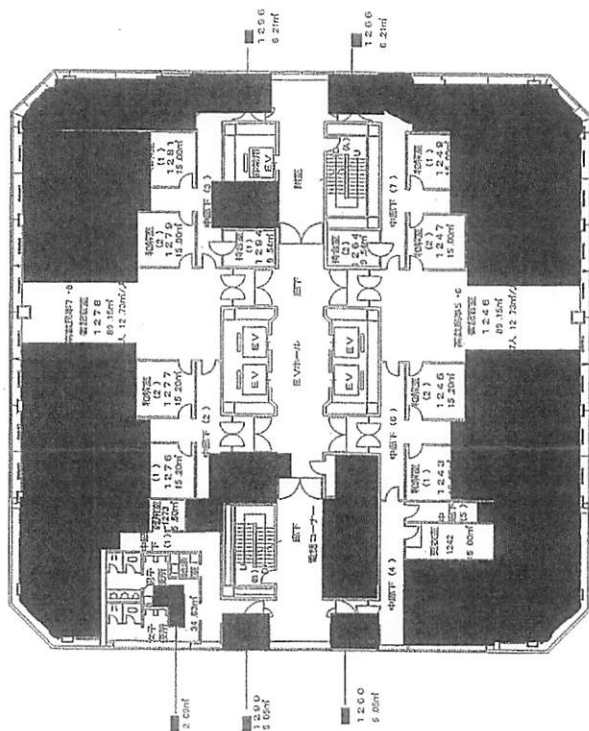


別紙 10階平面図 1,476.61m² 縮尺 1/400

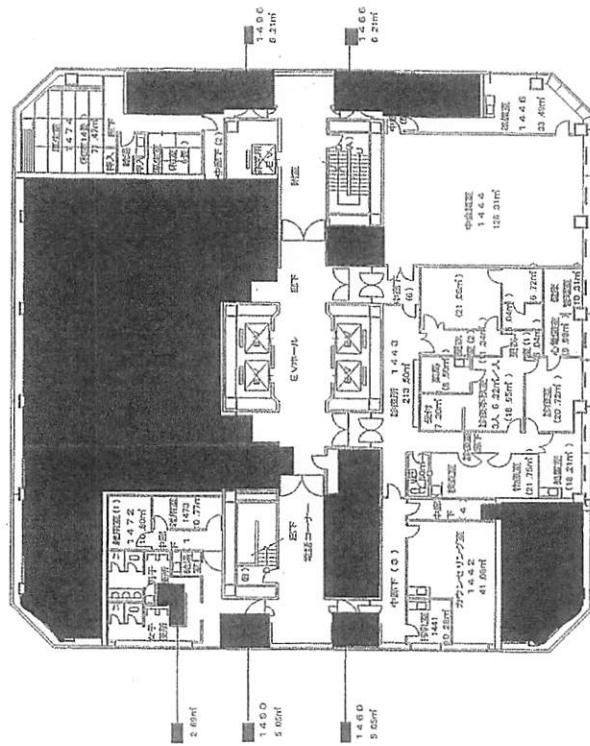


別館 1階平面図

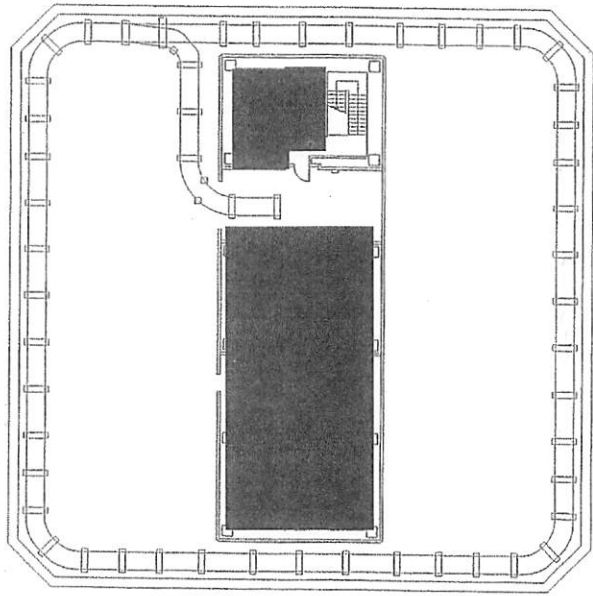
1,476.61m² 縮尺 1/400



別館 12階平面図 1,476.61m² 縮尺 1/400

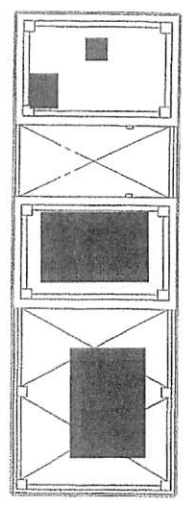


別館 1-6階平面図 1,476.61㎡ 縮尺 1/400



列位館 庭園平面図

縮尺 1/400



列位館 塔閣階平面図

189.84m²